

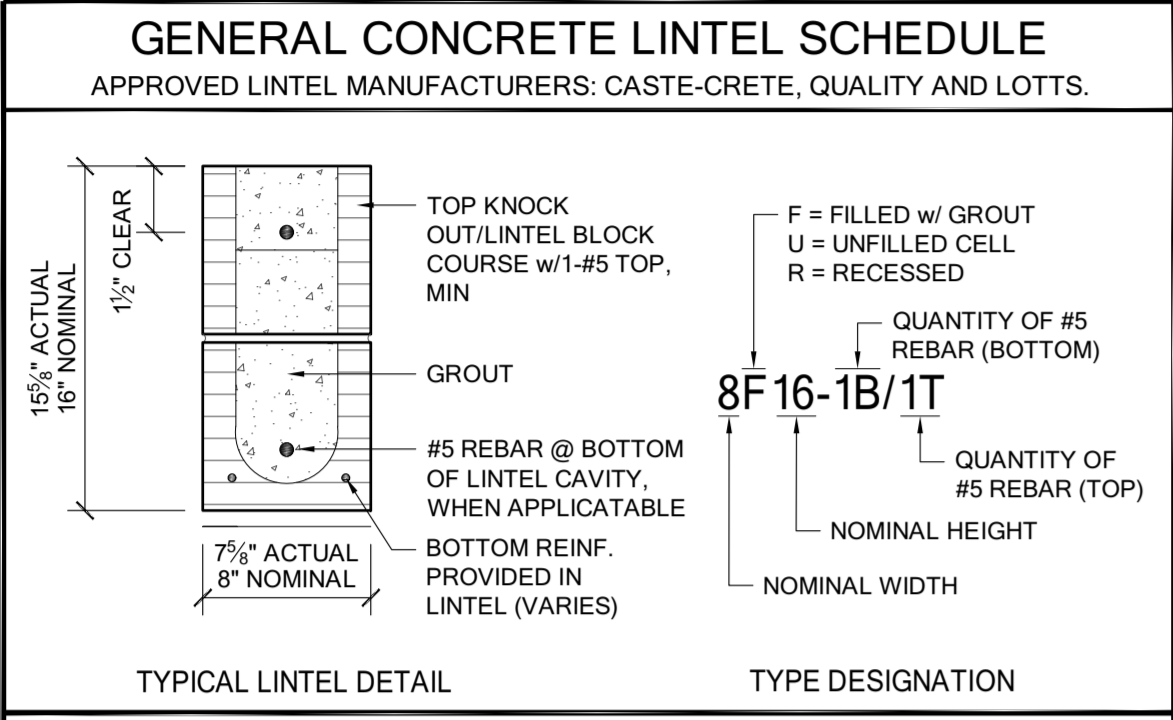
LINTEL MINIMUM DEPTHS ARE CALLED OUT ON LINTEL PLAN. IF CONTRACTOR INSTALLS A DEEPER LINTEL THAN INDICATED ON THE PLAN, DOING THIS INCREASES THE STRENGTH OF THE LINTEL AND IS APPROVED WITHOUT ENGINEERING LETTER. IF A SMALLER LINTEL IS INSTALLED CONTACT EOR FOR APPROVAL. (SEE SHEET L1 FOR LINTEL SCHEDULE).

WALL TYPE	
SYMBOL	TYPE
	NEW-MASONRY WALL. SEE ARCHITECTURAL DRAWINGS FOR TOP OF WALL ELEVATION.
	EXISTING OPENING WITH NEW INFILL. SEE BEARING WALL SCHEDULE.
	2 x INTERIOR BEARING / SHEAR WALL. SEE BEARING WALL SCHEDULE.
	NON BEARING INTERIOR WALL. COORDINATE WITH ARCHITECTURAL DRAWINGS FOR WALL LOCATIONS.

City of Ormond Beach
REVIEWED FOR
CODE COMPLIANCE*

BP19-0003561
Stamped By: Roxanne
Date: 07/17/19
04:38 PM

JAMES C. LUCIA
RESIDENTIAL DESIGN
website: lucia@luciacdesigns.com
e-mail: j.lucia@luciacdesigns.com

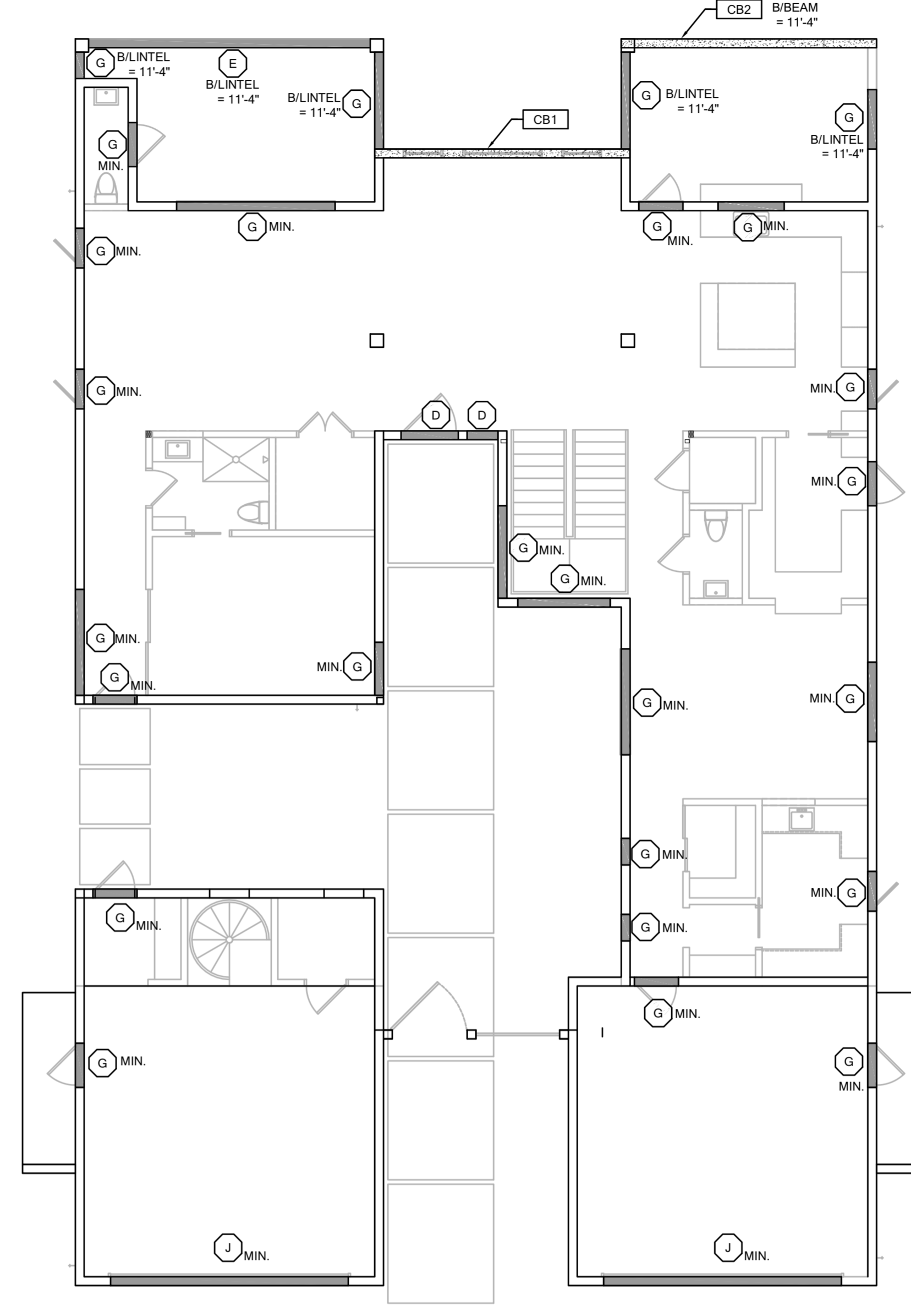


MARK	LINTEL DESIGN	MARK	LINTEL DESIGN	MARK	LINTEL DESIGN
A	8RF6-0B/1T	D	8F24-1B/1T	H	8RF22-0B/1T
B	8F8-0B/1T	J	8RF30-1B/1T	P	8F24-0B/1T
C	8RF14-1B/1T	L	8F32-1B/1T	R	8RF30-0B/1T
E	8F16-1B/1T	M	8RF14-0B/1T	S	8F32-0B/1T
F	8F20-1B/1T	N	8F16-0B/1T	T	8F28-1B/1T
G	8RF22-1B/1T	O	8F20-0B/1T	U	8F40-1B/1T
					8F18-2B/2T

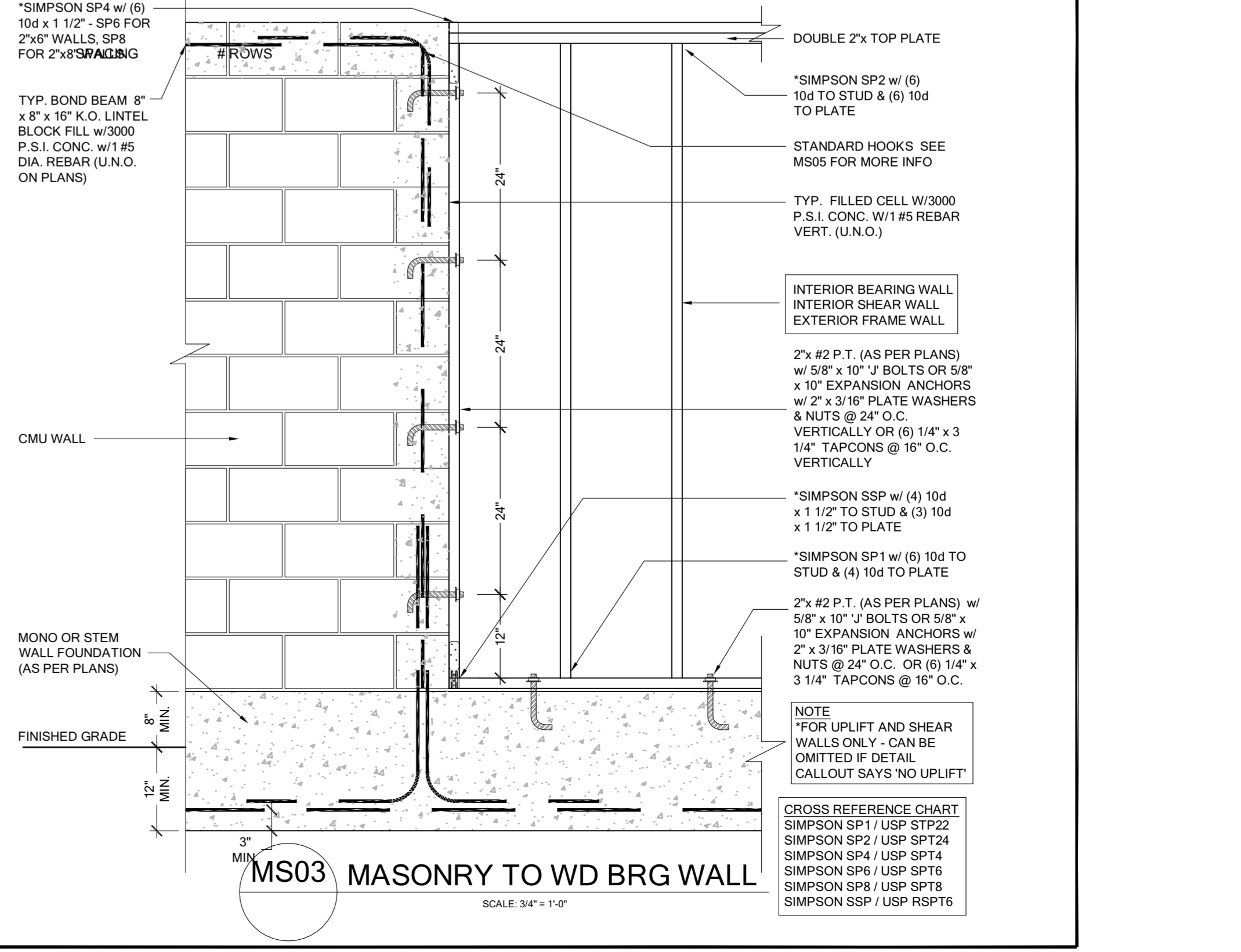
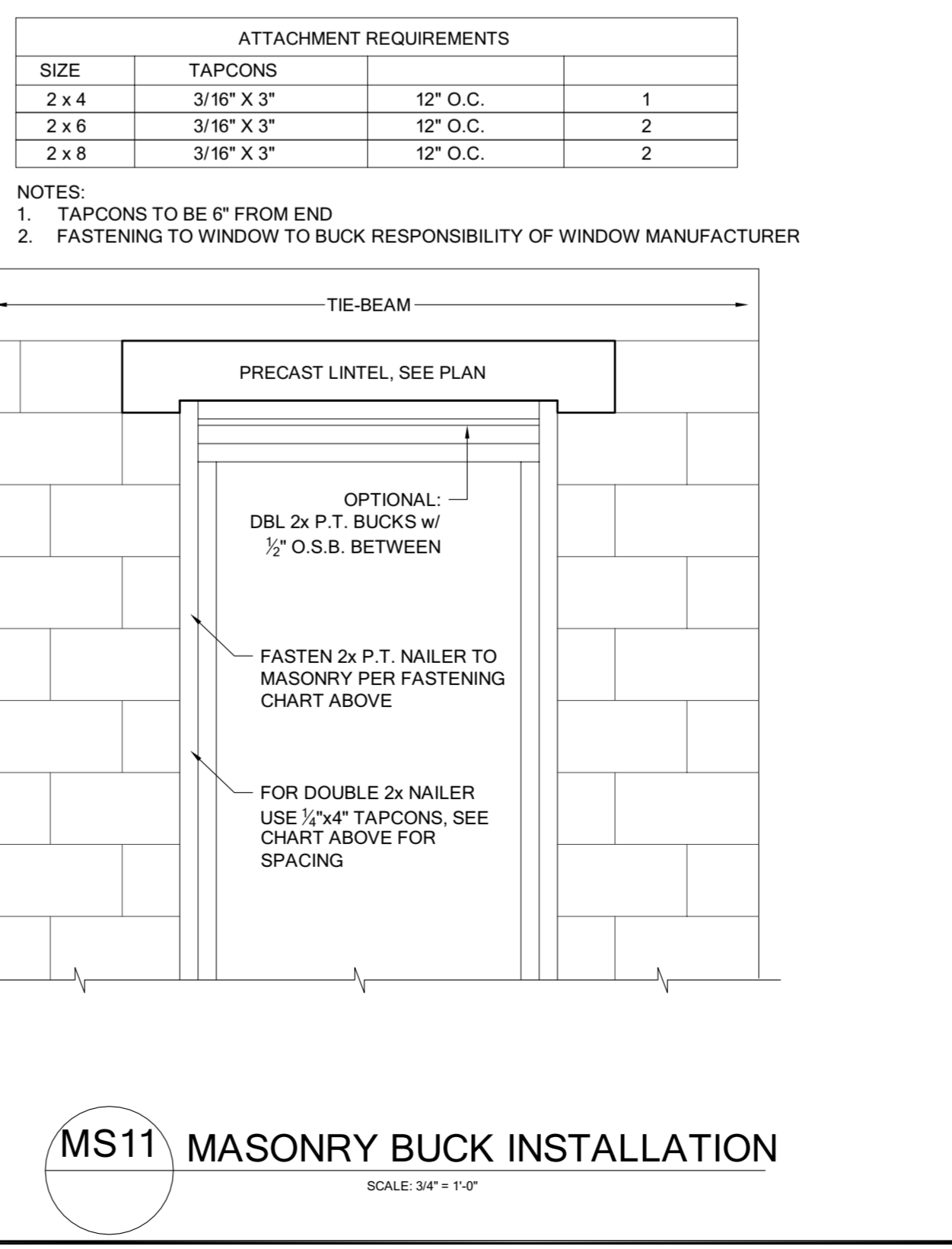
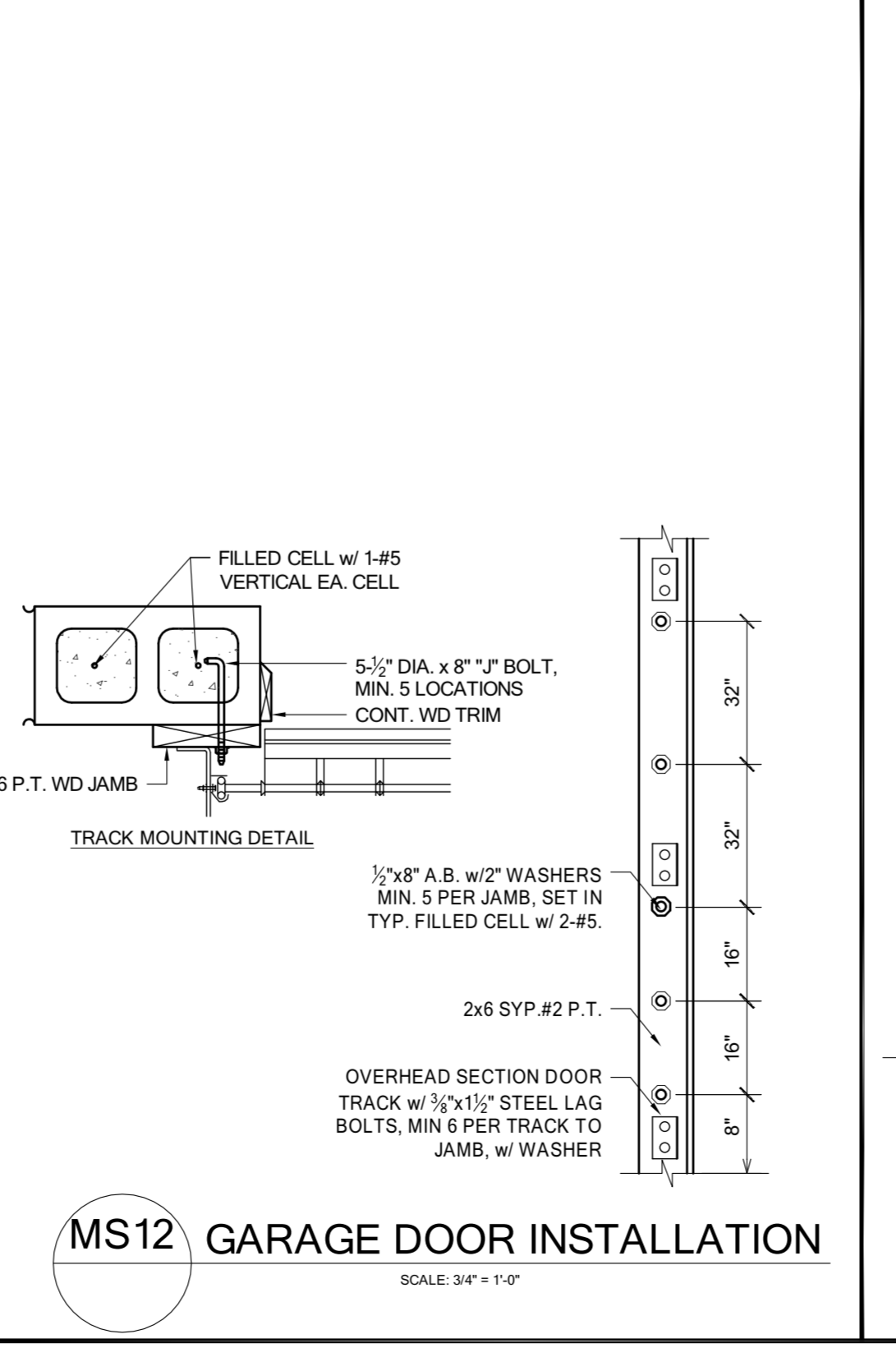
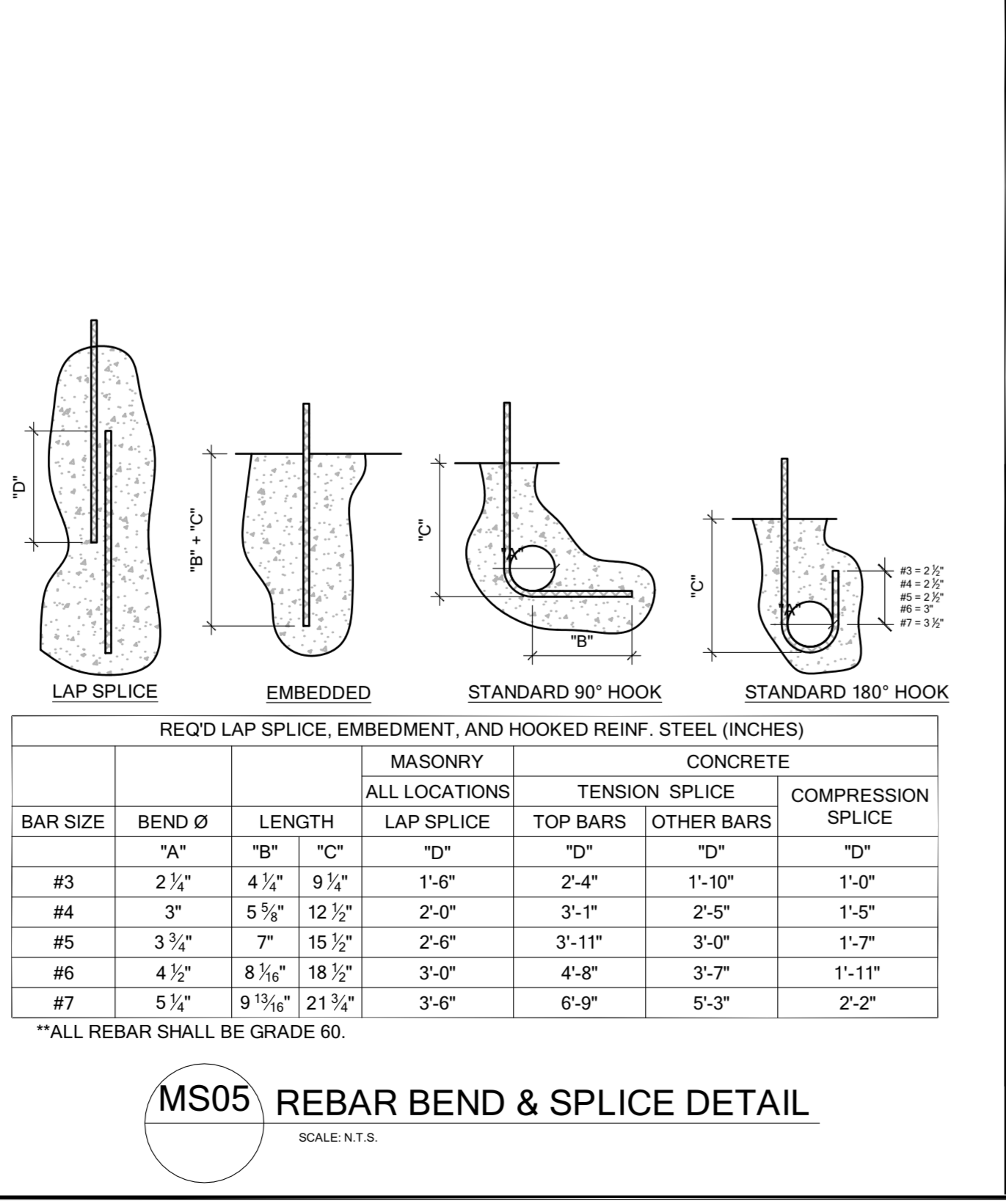
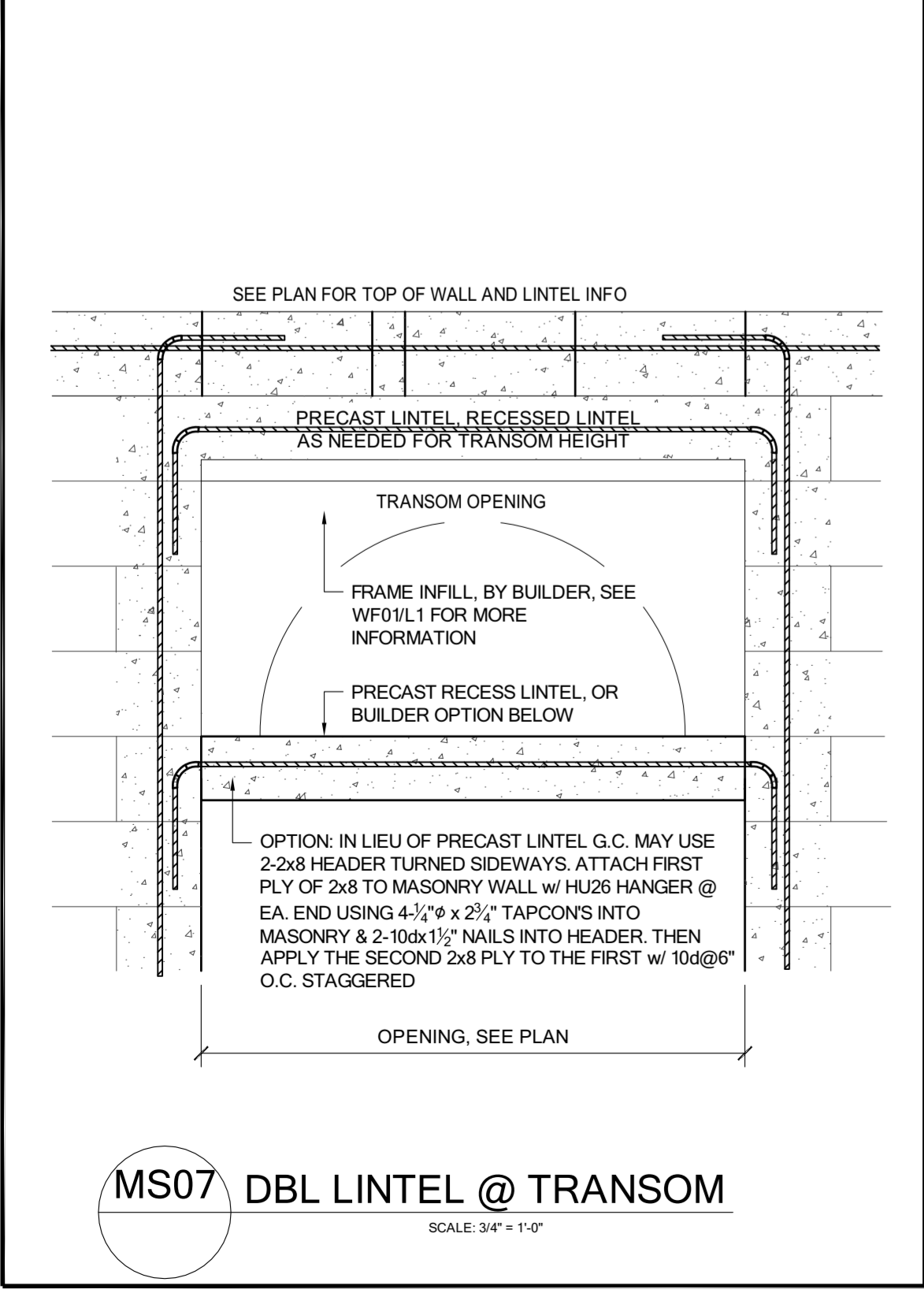
- GENERAL INSTALLATION NOTES:
1. PROVIDE FULL MORTAR HEAD AND BED JOINTS.
 2. SHARE FILLED LINTELS ARE REQUIRED.
 3. INSTALLATION OF LINTEL MUST COMPLY w/ THE ARCHITECTURAL AND STRUCTURAL DRAWINGS.
 4. U/LINTELS ARE LOCATED MANUFACTURED w/ 3/4" LONG NOTCHES AT THE END TO ACCOMMODATE VERTICAL CELL REINFORCING AND GROUTING.
 5. ALL LINTELS MEET OR EXCEED L/360 VERTICAL DEFLECTION, EXCEPT LINTELS 17'-4" AND LONGER w/ NOMINAL HEIGHT OF 8" MEET OR EXCEED L/180.
 6. BOTTOM FIELD ADDED REBAR TO BE LOCATED AT THE BOTTOM OF THE LINTEL CAVITY.
 7. 3/8" WIRE STIRRUPS ARE WELDED TO THE BOTTOM STEEL FOR MECHANICAL ANCHORAGE.
 8. CAST-IN-PLACE CONC. MAY BE PROVIDED IN COMPOSITE LINTELS IN LIEU OF CMU SAFE LOAD RATING BASED ON RATIONAL DESIGN ANALYSIS PER ACI 318 AND ACI 530.
 9. FLORIDA APPROVAL NUMBER 158-1.
 10. THE EXTERIOR SURFACE OF LINTELS INSTALLED IN EXTERIOR CONCRETE MASONRY WALLS SHALL HAVE A COATING OF STUCCO APPLIED IN ACCORDANCE WITH ASTM C-928 OR OTHER APPROVED COATING.
 11. LINTELS LOADED SIMULTANEOUSLY w/ VERTICAL (GRAVITY AND UPLIFT) AND HORIZONTAL (LATERAL) LOADS SHOULD BE FOR COMBINE LOADING WITH THE FOLLOWING EQUATIONS:

$$\frac{\text{APPLIED VERTICAL LOAD}}{\text{SAFE VERTICAL LOAD}} + \frac{\text{APPLIED HORIZONTAL LOAD}}{\text{SAFE HORIZONTAL LOAD}} \leq 1.0$$

- GENERAL MATERIAL NOTES:
1. f_c PRECAST LINTEL = 3500 P.S.I.
 2. f_c PRESTRESSED LINTEL = 6000 P.S.I.
 3. GROUTED PER ASCM C478 $f_g = 3000$ P.S.I. w/ MAX 3/4" AGGREGATE AND 8" TO 11" SUMP.
 4. CMU PER ASTM C90 w/ MIN NET AREA COMPRESSION STRENGTH = 1900 P.S.I.
 5. REBAR PER ASTM A615 GRADE 60.
 6. 270 LOW RELAXATION 3/8" WIRE PER ASTM A510.
 7. MORTAR PER ASTM C270 TYPE M OR S.
- GENERAL LINTEL NOTES:
1. AREAS OF BLOCK ABV. MASONRY OPENINGS ARE TO BE GROUTED SOLID TO THE BEAM.
 2. 1-#5 REBAR IN THE BEAM IS TO BE CONT. THROUGH OUT INCLUDING ABV. MASONRY OPENINGS. (U.N.O.)
 3. ALL STANDARD LINTELS TO HAVE MIN. 4" BEARING EACH END BASED ON CAST CRETE, LOTS, AND QUALITY LINTEL SPECS.
 4. LINTEL MINIMUM DEPTHS ARE CALLED OUT ON LINTEL PLAN. IF CONTRACTOR INSTALLS A DEEPER LINTEL THAN INDICATED ON THE PLAN, DOING THIS INCREASES THE STRENGTH OF THE LINTEL AND IS APPROVED WITHOUT ENGINEERING LETTER. IF A SMALLER LINTEL IS INSTALLED CONTACT EOR FOR APPROVAL.
 5. (I) ANY LINTEL DEEPER THAN 32" HAS BEEN VERIFIED TO WORK, AS A MIN. 32" FOR THE LOAD CONDITIONS. ANY LINTEL GREATER THAN 32" HAS A GREATER CAPACITY AND THEREFORE IS ADEQUATE FOR THE LOADS.
 6. G.C. TO VERIFY ALL LINTEL DIMENSIONS IN FIELD. DIMENSIONS SHOWN ARE CLEAR SPAN ONLY.



LINTEL PLAN
SCALE: 1/8" = 1'-0"



DESAI RESIDENCE
3435 PINEHURST AVE.
ORLANDO, FL 32804

PROJECT NAME: DESAI RESIDENCE
PLAN REVISIONS:

DATE	COMMENT	DATE
12/05/18		

DATE: 12/05/18
DRAWN BY: MN, NK
CHECKED BY: BH
APPROVED BY: MG

SHEET NUMBER
L1

FDS ENGINEERING ASSOCIATES
249 Mainland Ave., Suite 2000, Alhambra Springs, FL 32710
G. CERTIFICATE OF AUTHORIZATION NO. 141320M
FL 1547, BROWNS, P.E. FL 15472E
DATE: March 26, 2019