

PLUMBING FIXTURE CONNECTION SCHEDULE							
ITEM	DESCRIPTION	WASTE	TRAP	VENT	CW	HW	REMARKS
WC-1	WATER CLOSET	4"	INTEG	2"	1"	-	WL HG FL VLV 1.6 GAL
WC-2	WATER CLOSET	4"	INTEG	2"	1"	-	WL HG FL VLV ADA 1.6 GAL
UR-1	URINAL	2"	INTEG	1-1/2"	3/4"	-	WL HG 0.125 GAL ADA
L-1	LAVATORY	2"	1-1/4"	1-1/2"	1/2"	1/2"	CTR
L-2	LAVATORY	2"	1-1/4"	1-1/2"	1/2"	1/2"	WL HG ADA
S-1	SINK - SINGLE	2"	1-1/2"	1-1/2"	1/2"	1/2"	SS
US-1	LAUNDRY SINK	2"	1-1/2"	1-1/2"	1/2"	1/2"	-
JS-1	JANITOR SINK	3"	3"	1-1/2"	3/4"	3/4"	FLR MTD
EWC-1	ELEC. WATER COOLER	2"	1-1/4"	1-1/2"	1/2"	-	WALL HUNG DOUBLE ADA
ABBREVIATIONS							
CTR	COUNTERTOP		MTD	MOUNTED		WL	WALL
FLR	FLOOR		GAL	GALLONS		TK	TANK
HG	HUNG		SS	STAINLESS STEEL			
FL	FLUSH		ADA	AMERICAN DISABILITIES ACT COMPLIANT			
VLV	VALVE						
NOTES							
1. PROVIDE BY OTHERS INSTALLED BY PLUMBING CONTRACTOR							

ELECTRIC WATER HEATER SCHEDULE	
MARK	EW-H-1
MANUFACTURER	A.O. SMITH
MODEL	PXHS 40
STORAGE CAPACITY (GAL)	40
RECOVERY (GPH)	20 @ 80°R
UNIT SIZE	47"H x 23" DIA.
ENERGY-EFFICIENCY	95%
OPERATIONAL WEIGHT (LBS)	458
KW INPUT	4.5
VOLTAGE/PHASE	208V/1
NOTES	
1. PROVIDE WITH TIME SWITCH. CONNECT THE WATER HEATER, RECIRC. PUMP AND AQUASTAT TO THE TIME SWITCH. REFER TO ELECTRICAL DRAWINGS FOR TIME SWITCH LOCATION AND SPECIFICATIONS.	


HOT WATER RECIRC. PUMP SCHEDULE	
MARK	HWRP-1
MANUFACTURER	ARMSTRONG
MODEL	H-32
VOLTAGE/H.P.	120/ 1/6
PHASE	1
RPM	1750
CAPACITY (GPM)	10
TOTAL HEAD (FEET)	10

SHOCK ARRESTOR SCHEDULE	
P.D.I. SIZE	FIXTURE UNITS
'SA-A'	1-11
'SA-B'	12-32
'SA-C'	33-60
'SA-D'	61-113
'SA-E'	114-154
'SA-F'	155-330

PLUMBING SYMBOL LEGEND	
SYMBOL/ABBREV.	DESCRIPTION
— GR —	SANITARY PIPING
— — — — —	GREASE WASTE PIPING
— — — — —	VENT PIPING
— — — — —	RAINWATER PIPING
— — — — —	DOMESTIC COLD WATER PIPING
— — — — —	DOMESTIC HOT WATER PIPING
— — — — —	DOMESTIC HOT WATER RECIRCULATING PIPING
— G —	NATURAL GAS PIPING
— A —	COMPRESSED AIR PIPING
⊗	FLOOR DRAIN
⊙	HUB DRAIN
⊠	FLOOR SINK
⊙	PIPING TEE UP
⊙	PIPING TEE DOWN
⊙	PIPING ELL UP
⊙	PIPING ELL DOWN
⊠	GATE VALVE
⊠	BALL VALVE
⊙	FLOOR CLEANOUT
⊗	EXTERIOR CLEANOUT
⊠	WALL CLEANOUT
⊠	VALVE IN VERTICAL PIPE
⊗	POINT OF CONNECTION
ABBREVIATION	DESCRIPTION
AFF	ABOVE FINISHED FLOOR
BFF	BELOW FINISHED FLOOR
CONT	CONTINUATION
CW	COLD WATER (POTABLE)
DW	DISHWASHER
EWC	ELECTRIC WATER COOLER
FD	FLOOR DRAIN
FCO	FLOOR CLEAN OUT
GW	GAS WATER HEATER
HB	HOSE BIBB
HWRP	HOT WATER RECIRC. PUMP
JS	JANITOR SINK
L	LAVATORY
O.F.C.I.	OWNER FURNISHED CONTRACTOR INSTALLED
SA	SHOCK ARRESTOR
UNO	UNLESS NOTED OTHERWISE
WC	WATER CLOSET
WH	WALL HYDRANT
WB	WASHER BOX

- GENERAL NOTES**
- FIELD VERIFY ALL MEASUREMENTS PRIOR TO LAYING AND CONNECTING ANY PIPING. NOTIFY ARCHITECT OF ANY DISCREPANCIES.
  - PROVIDE SHOCK ARRESTORS FOR PREVENTING WATER HAMMER AT EACH BATTERY OF FIXTURES ON THE COLD AND HOT WATER SUPPLIES. PROVIDE SHOCK ARRESTORS AT ISOLATED PLUMBING FIXTURES. SHOCK ARRESTORS SHALL BE FACTORY FABRICATED AND LOCATED FULLY ACCESSIBLE. SHOCK ARRESTORS SHALL BE SIZED PER PLUMBING AND DRAINAGE INSTITUTE STANDARD WH-201. AIR CHAMBERS ARE NOT ACCEPTABLE.
  - MAINTAIN FIRE RATING AND WEATHERPROOFING INTEGRITY OF ALL PIPING PENETRATIONS.
  - ROUTE ALL PIPING ABOVE CEILINGS, WITHIN WALLS, OR IN CHASES EXCEPT AS SPECIFICALLY NOTED.
  - PROVIDE ACCESS PANELS TO ALL VALVES WITHIN CHASES OR ABOVE NON-ACCESSIBLE CEILINGS. SEE ARCHITECTURAL DRAWINGS FOR CEILING TYPES.
  - SEE ARCHITECTURAL DRAWINGS FOR EXACT LOCATIONS OF PLUMBING FIXTURE MOUNTING HEIGHTS AND DIMENSIONS. DO NOT SCALE DRAWINGS. DRAWINGS ARE DIAGRAMMATIC AND ARE INTENDED TO SHOW GENERAL ROUTING.
  - VERIFY ELEVATIONS OF SEWER PIPING TO WHICH NEW SEWERS ARE TO BE CONNECTED PRIOR TO INSTALLATION OF ANY PIPING.
  - PROVIDE DIELECTRIC UNIONS AT CONNECTIONS OF DISSIMILAR METALS.
  - PROVIDE 3/8" CW SUPPLY WITH RECESSED VALVE BOX, STOP VALVE, AND FLEXIBLE COPPER SUPPLY TUBE TO REFRIGERATORS. COORDINATE HEIGHT OF WATER CONNECTION WITH REFRIGERATOR SUPPLIER.

ISSUE FOR BID - 8/7/2019



**SALAS O'BRIEN**  
[ expect a difference ]  
3501 Quadrangle Boulevard, Suite 100  
Orlando, Florida 32817  
(407) 350-0400  
CERT. OF AUTH. NO. 6106  
■ GARY A. WILKERSON, P.E. 43167  
■ KYLE J. CARTER, P.E. 53059  
■ JEFF A. KIRKMAN, P.E. 65629  
■ ADAM S. LEVINE, P.E. 77010  
19005

DATE

REVISION

07/12/2019

SOBE 19005

Sheet no.

P0.1

LEGEND AND GENERAL NOTES - PLUMBING

EMBRY-RIDDLE AERONAUTICAL UNIVERSITY  
NEW PRINT SHOP BUILDING

DRAWN

CHECKED



REFERENCE NOTES

① CONNECT NEW 1/2" COMPRESSED AIR PIPING INTO EXISTING AIR LINE AT EXISTING AIR COMPRESSOR FIELD VERIFY EXACT LOCATION.



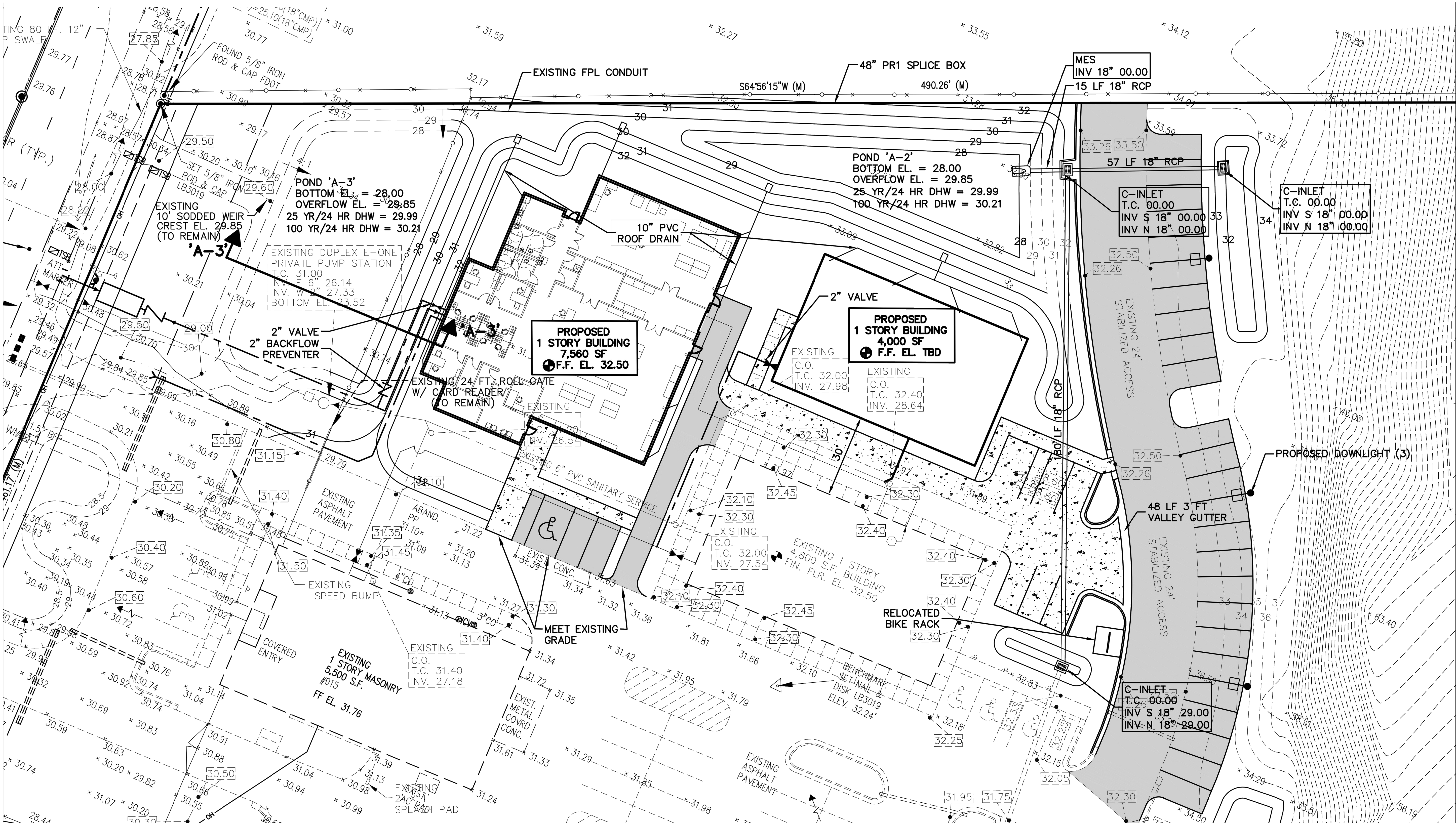
SALAS O'BRIEN  
[expect a difference]

3501 Quadrangle Boulevard, Suite 100  
Orlando, Florida 32817  
(407) 350-0400

CERT. OF AUTH. NO. 6106

□ GARY A. WILKERSON, P.E. 43167  
□ RYLEE J. CARTER, P.E. 53089  
□ JEFF A. KIRKMAN, P.E. 65629  
□ ADAM S. LEVINE, P.E. 77010

19005



GENERAL NOTES

1. COMPRESS AIR PIPING UNDERGROUND PIPING SHALL BE PVC ASTM D1785, SCHEDULE 40 WITH ASTM D2644, SCHEDULE 40, SOCKET TYPE FITTING.

ISSUE FOR BID - 8/7/2019

SITE PLAN - PLUMBING

Date: 07/12/2019  
Job no.: SOE 19005  
Sheet no.:

DATE  
REVISION  
DRAWN  
CHECKED

EMBRY-RIDDLE AERONAUTICAL UNIVERSITY  
NEW PRINT SHOP BUILDING

P1.1





CERT. OF AUTH. NO. 6106

19005

190

FLOOR PLAN - PLUMBING

EMBRY-RIDDLE AERONAUTICAL UNIVERSITY  
NEW PRINT SHOP BUILDING

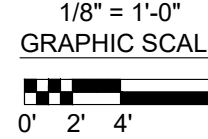
Date	07/12/2019
Job no.	SOBE 19005
Sheet no.	P1.2

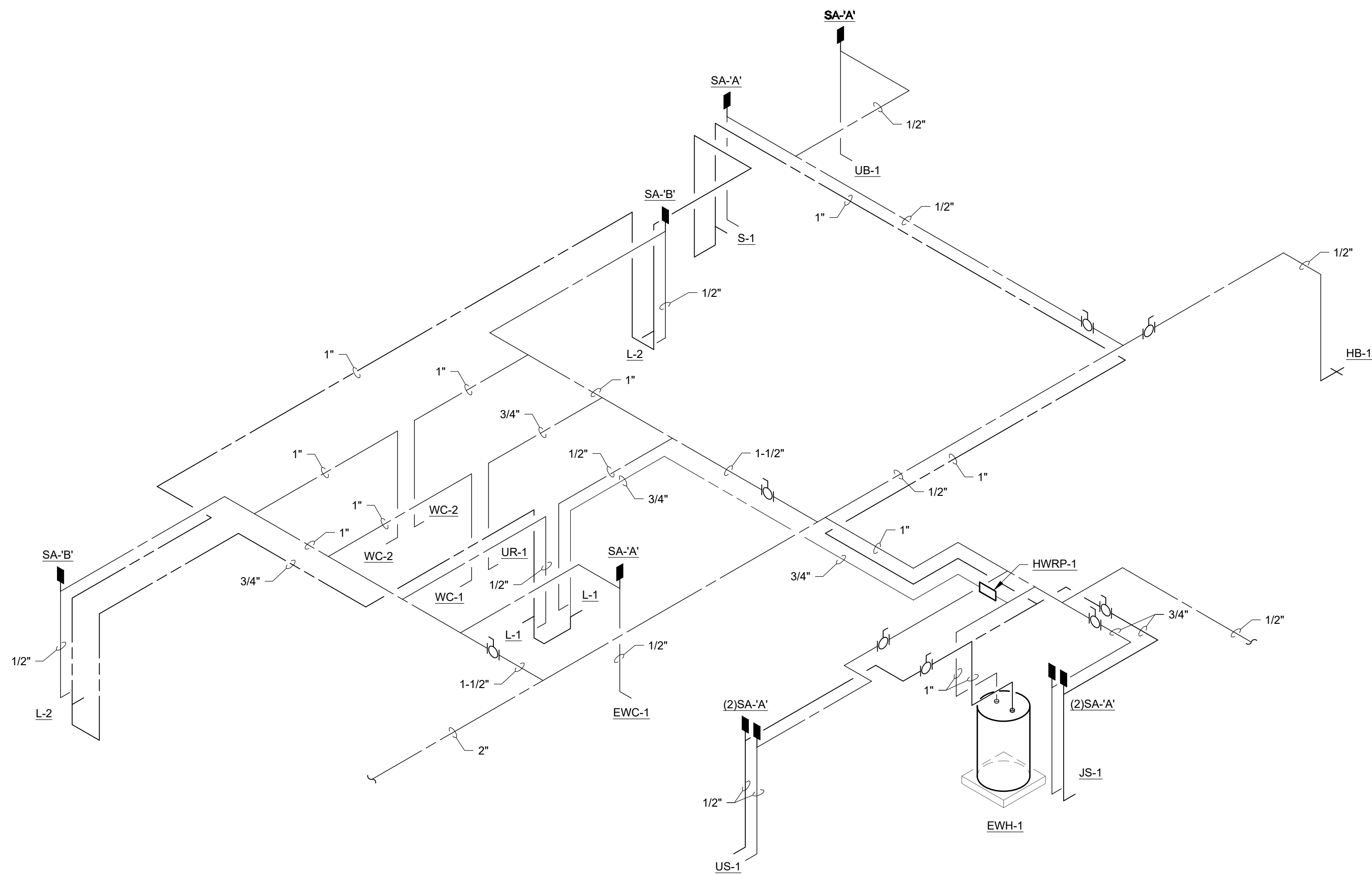
# FLOOR PLAN - PLUMBING

- ① 4" SANITARY LINE. FOR CONTINUATION REFER TO CIVIL DRAWINGS. LEAVING INVERT AT -2'-6" BFF.
- ② 2" COLD WATER UP FROM BELOW GRADE. PROVIDE BALL VALVE IN RISER AT 4'-0" AFF.
- ③ 2" COLD WATER LINE FOR CONTINUATION REFER TO CIVIL DRAWINGS.
- ④ 1/2" COMPRESSED AIR LINE UNDERGROUND. REFER TO PLUMBING SITE PLAN FOR CONTINUATION.
- ⑤ 1/2" COMPRESSED AIR LINE UP FROM BELOW GRADE. PROVIDE BALL VALVE IN RISER AT 4'-0" AFF.
- ⑥ 1/2" COMPRESSED AIR DOWN WALL AND CAP AT 3'-0" AFF. COORDINATE EXACT LOCATION WITH OWNER.
- ⑦ 1/2" COLD WATER DOWN TO HOSE BIBB. PROVIDE BALL VALVE IN RISER AT 4'-0" AFF.

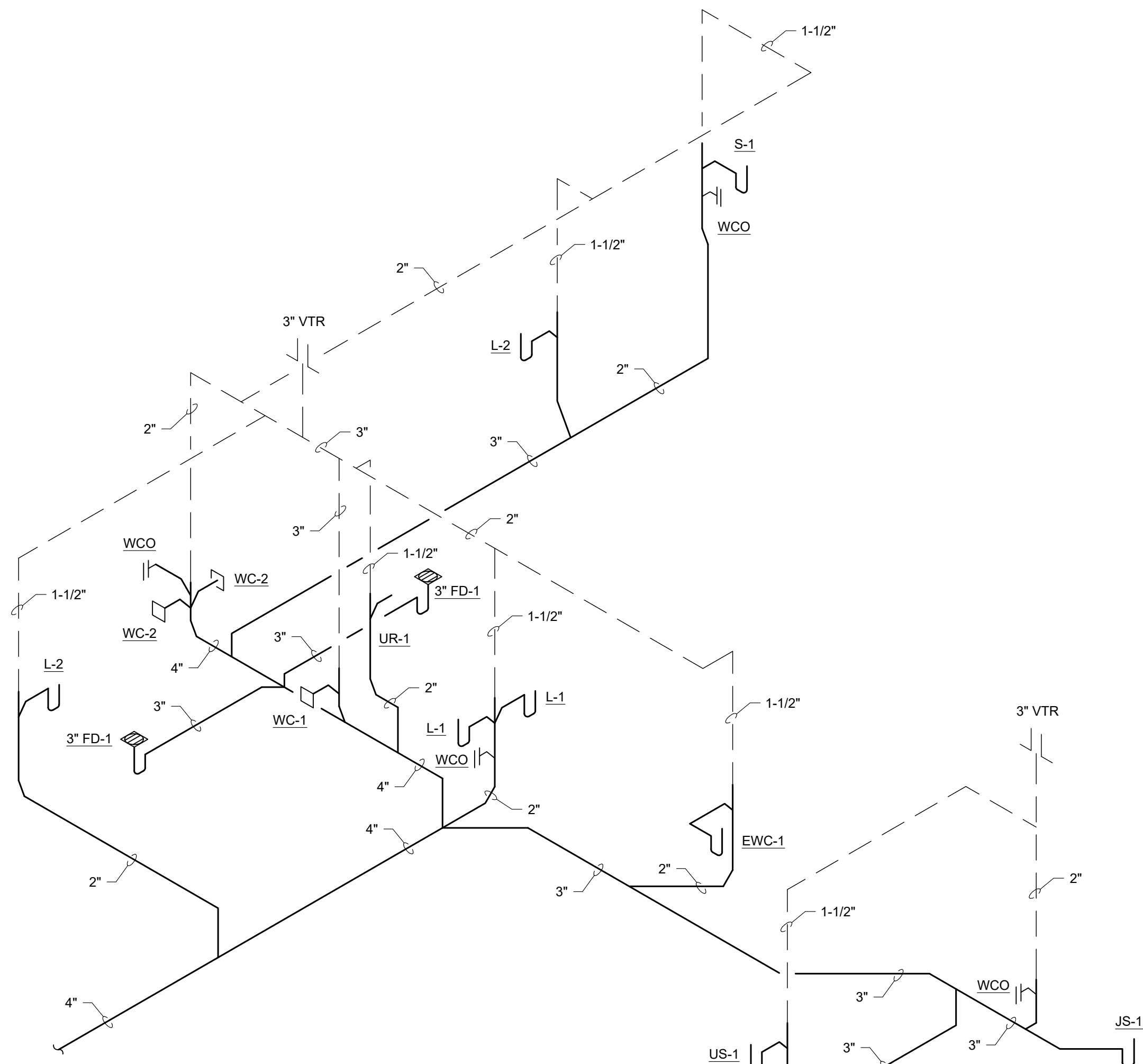


1. COMPRESS AIR PIPING INSIDE THE BUILDING SHALL BE TYPE L, COPPER TUBE, WROUGHT-COPPER FITTINGS; AND SOLDERED JOINTS. UNDERGROUND PIPING SHALL BE PVC ASTM D1785, SCHEDULE 40 WITH ASTM D2644, SCHEDULE 40, SOCKET TYPE FITTING.





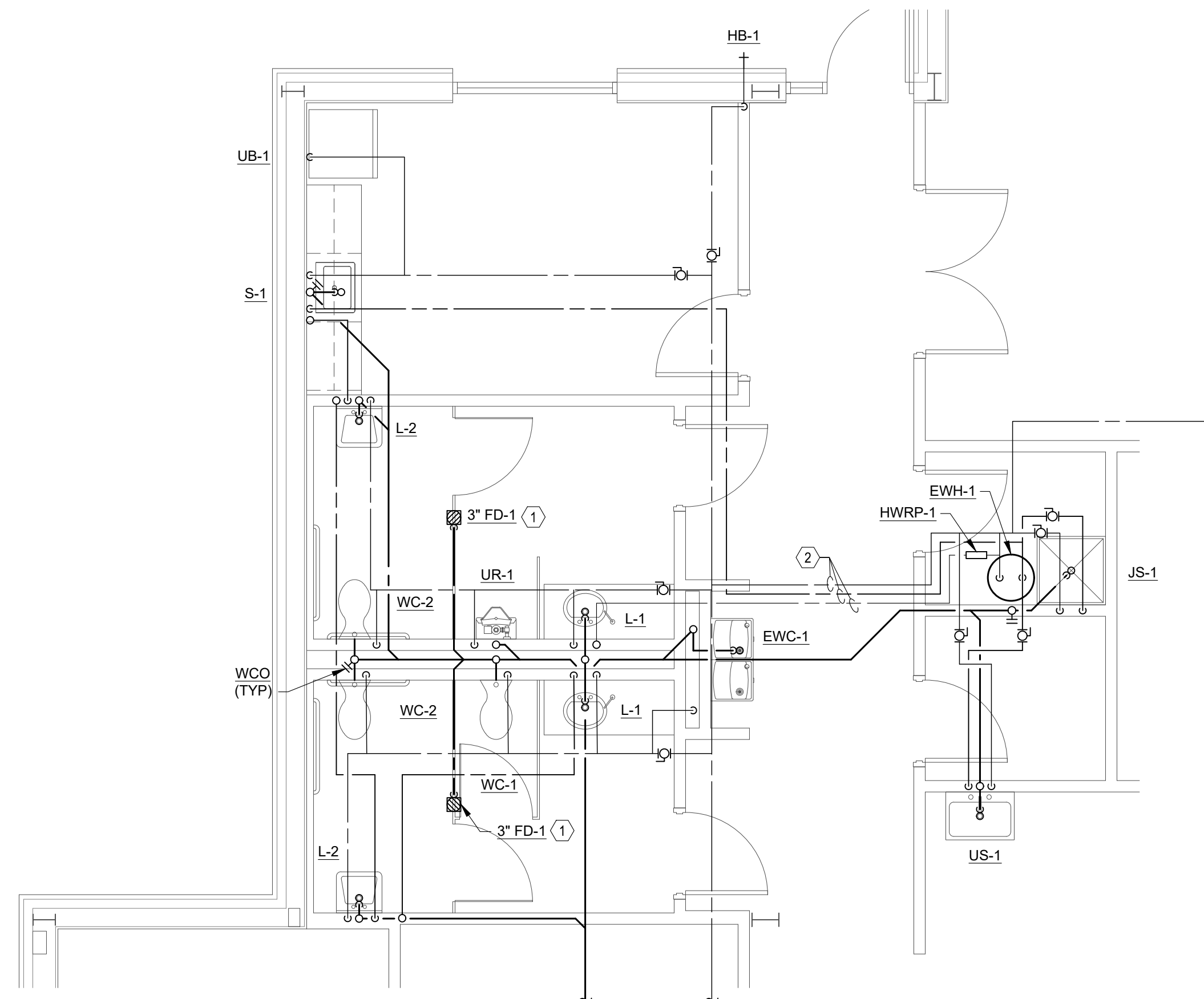
W1  
P1.3 **HOT AND COLD WATER RISER DIAGRAM**  
NOT TO SCALE



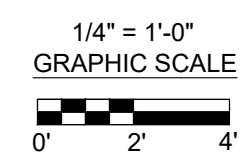
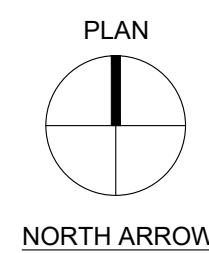
S1  
P1.3 **WASTE AND VENT RISER DIAGRAM**  
NOT TO SCALE

#### REFERENCE NOTES

- 1 PROVIDE FLOOR DRAIN WITH WATERLESS IN-LINE TRAP SEAL CONFORMING TO ASSE 1072.
- 2 INSTALL WATER PIPING INSIDE METAL DUCT WORK. COORDINATE EXACT LOCATION WITH MECHANICAL DRAWINGS.



1  
P1.3 **FLOOR PLAN - PLUMBING**  
1/4" = 1'-0"



DATE	
REVISION	
DRAWN	
CHECKED	

**ENLARGED FLR PLAN & RISERS - PLUMBING**

EMBRY-RIDDLE AERONAUTICAL UNIVERSITY  
NEW PRINT SHOP BUILDING

P1.3

Date: 07/12/2019  
Job no.: SOE 19005  
Sheet no.: P1.3

ISSUE FOR BID - 8/7/2019



**SALAS O'BRIEN**  
expect a difference

3501 Quadrangle Boulevard, Suite 100  
Orlando, Florida 32817  
(407) 350-0400

CERT. OF AUTH. NO. 6106

■ GARY A. WILKERSON, P.E. 43167  
■ KYLE J. CARTER, P.E. 53069  
■ JEFF A. KIRKMAN, P.E. 65629  
■ ADAM S. LEVINE, P.E. 77010

19005