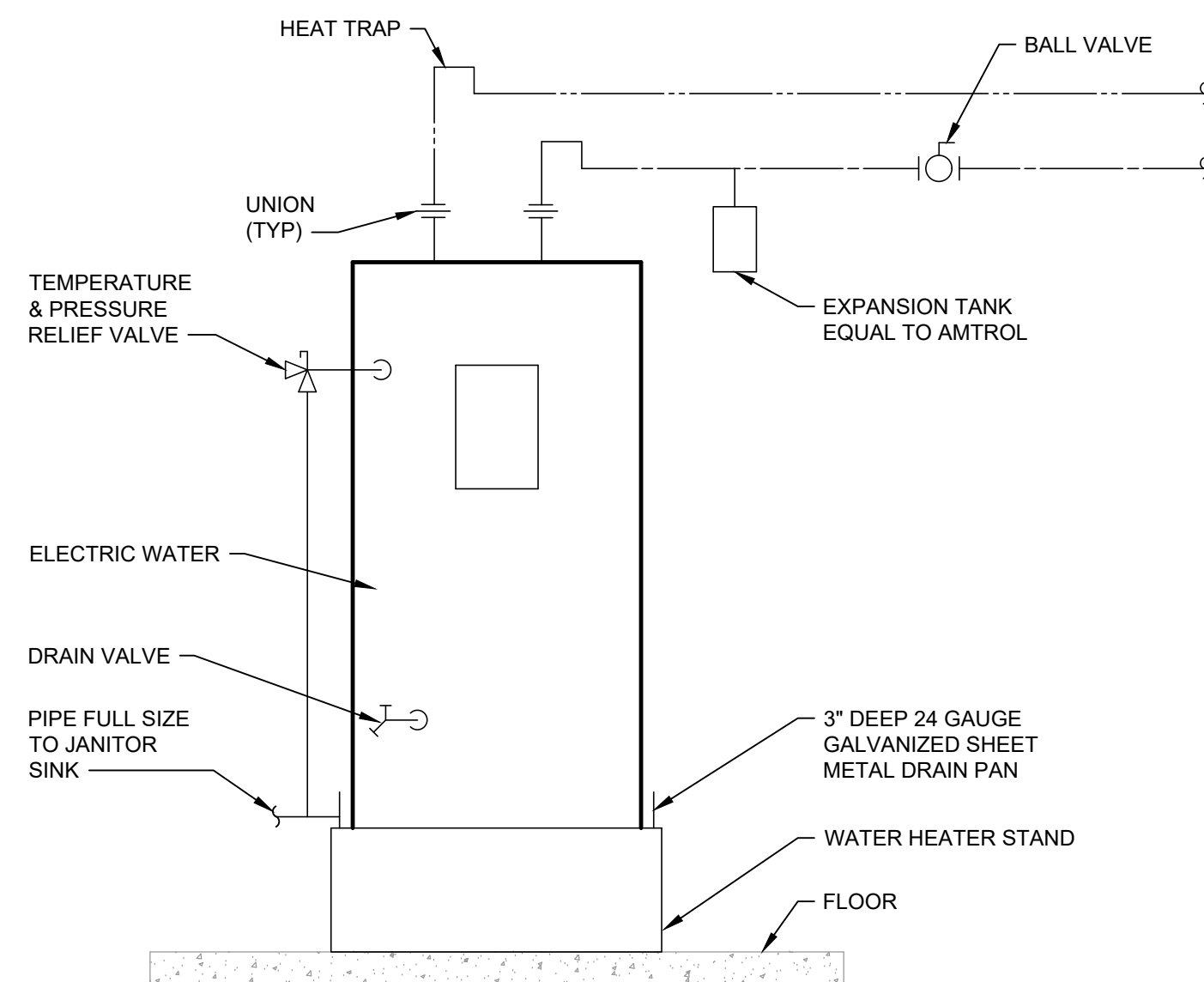


2 SUMP PUMP DETAIL
P1.001 NOT TO SCALE



1 ELECTRIC WATER HEATER DIAGRAM
P1.001 NOT TO SCALE NO RECIRC. PUMP

PLUMBING FIXTURE CONNECTION SCHEDULE							
ITEM	DESCRIPTION	WASTE	TRAP	VENT	CW	HW	REMARKS
WC-1	WATER CLOSET	4"	INTEG	2"	1"	-	FLR MTD FL VLV ADA 1.6 GAL
L-1	LAVATORY	2"	1-1/4"	1-1/2"	1/2"	1/2"	WL HG ADA
S-1	SINK - SINGLE	2"	1-1/2"	1-1/2"	1/2"	1/2"	SS
JS-1	JANITOR SINK	3"	3"	1-1/2"	3/4"	3/4"	FLR MTD
EWC-1	ELEC. WATER COOLER	2"	1-1/4"	1-1/2"	1/2"	-	WALL HUNG DOUBLE ADA

ABBREVIATIONS			
CTR	COUNTERTOP	MTD	MOUNTED
FLR	FLOOR	GAL	GALLONS
HG	HUNG	SS	STAINLESS STEEL
FL	FLUSH	ADA	AMERICAN DISABILITIES ACT COMPLIANT
VLV	VALVE		
WL	WALL		
TK	TANK		

ELECTRIC WATER HEATER SCHEDULE	
MARK	EW-1,2
MANUFACTURER	A.O. SMITH
MODEL	PXHS 20
STORAGE CAPACITY (GAL)	20
RECOVERY (GPH)	20 @ 80°R
UNIT SIZE	22"H x 22" DIA.
ENERGY-EFFICIENCY	98%
OPERATIONAL WEIGHT (LBS)	240
KW INPUT	4.5
VOLTAGE/PHASE	208V/1

SUMP PUMP SCHEDULE	
MARK	SP-1
MANUFACTURER	ZOELLER
MODEL	152
GPM	50
TDH IN FT.	20
RPM	1750
UNIT SIZE	12"H x 8" DIA.
HP	1/2
VOLTAGE	115V
PHASE	1

SHOCK ARRESTOR SCHEDULE	
P.D.I. SIZE	FIXTURE UNITS
'SA-A'	1-11
'SA-B'	12-32
'SA-C'	33-60
'SA-D'	61-113
'SA-E'	114-154
'SA-F'	155-330

PLUMBING SYMBOL LEGEND	
SYMBOL/ABBREV.	DESCRIPTION
GR	SANITARY PIPING
---	GREASE WASTE PIPING
---	VENT PIPING
---	RAINWATER PIPING
---	DOMESTIC COLD WATER PIPING
---	DOMESTIC HOT WATER PIPING
---	DOMESTIC HOT WATER RECIRCULATING PIPING
G	NATURAL GAS PIPING
A	COMPRESSED AIR PIPING
⊗	FLOOR DRAIN
⊙	HUB DRAIN
⊠	FLOOR SINK
⊕	PIPING TEE UP
⊖	PIPING TEE DOWN
⊗	PIPING ELL UP
⊘	PIPING ELL DOWN
⊗	GATE VALVE
⊗	BALL VALVE
⊗	FLOOR CLEANOUT
⊗	EXTERIOR CLEANOUT
⊗	WALL CLEANOUT
⊗	VALVE IN VERTICAL PIPE
⊗	POINT OF CONNECTION

ABBREVIATION	DESCRIPTION
AFF	ABOVE FINISHED FLOOR
BFF	BELOW FINISHED FLOOR
CONT	CONTINUATION
CW	COLD WATER (POTABLE)
DW	DISHWASHER
EWC	ELECTRIC WATER COOLER
FD	FLOOR DRAIN
FCO	FLOOR CLEAN OUT
GWH	GAS WATER HEATER
HB	HOSE BIBB
HWRP	HOT WATER RECIRC. PUMP
JS	JANITOR SINK
L	LAVATORY
O.F.C.I.	OWNER FURNISHED CONTRACTOR INSTALLED
SA	SHOCK ARRESTOR
UNO	UNLESS NOTED OTHERWISE
WC	WATER CLOSET
WH	WALL HYDRANT
WB	WASHER BOX

GENERAL NOTES

- FIELD VERIFY ALL MEASUREMENTS PRIOR TO LAYING AND CONNECTING ANY PIPING, NOTIFY ARCHITECT OF ANY DISCREPANCIES.
- PROVIDE SHOCK ARRESTORS FOR PREVENTING WATER HAMMER AT EACH BATTERY OF FIXTURES ON THE COLD AND HOT WATER SUPPLIES. PROVIDE SHOCK ARRESTORS AT ISOLATED PLUMBING FIXTURES. SHOCK ARRESTORS SHALL BE FACTORY FABRICATED AND LOCATED FULLY ACCESSIBLE. SHOCK ARRESTORS SHALL BE SIZED PER PLUMBING AND DRAINAGE INSTITUTE STANDARD WH-201. AIR CHAMBERS ARE NOT ACCEPTABLE.
- MAINTAIN FIRE RATING AND WEATHERPROOFING INTEGRITY OF ALL PIPING PENETRATIONS.
- ROUTE ALL PIPING ABOVE CEILINGS, WITHIN WALLS, OR IN CHASES EXCEPT AS SPECIFICALLY NOTED.
- PROVIDE HOSE BIBBS AND WALL HYDRANTS 24" ABOVE FINISH FLOOR/GRADE AND INCLUDE BACKFLOW PREVENTION DEVICES.
- SEE ARCHITECTURAL DRAWINGS FOR EXACT LOCATIONS OF PLUMBING FIXTURE MOUNTING HEIGHTS AND DIMENSIONS. DO NOT SCALE DRAWINGS. DRAWINGS ARE DIAGRAMMATIC AND ARE INTENDED TO SHOW GENERAL ROUTING.
- VERIFY ELEVATIONS OF SEWER PIPING TO WHICH NEW SEWERS ARE TO BE CONNECTED PRIOR TO INSTALLATION OF ANY PIPING.
- ALL VENTS THROUGH THE ROOF SHALL BE A MINIMUM OF 10'-0" FROM ANY AIR INTAKE.
- PROVIDE 3/8" CW SUPPLY WITH RECESSED VALVE BOX, STOP VALVE, AND FLEXIBLE COPPER SUPPLY TUBE TO REFRIGERATORS. COORDINATE HEIGHT OF WATER CONNECTION WITH REFRIGERATOR SUPPLIER.
- DO NOT PENETRATE WALL FOOTINGS WITH PIPING, COORDINATE WITH GENERAL CONTRACTOR TO DROP FOOTINGS AS REQUIRED TO CLEAR PLUMBING SERVICES WHERE ABSOLUTELY NECESSARY. ALL PIPING PENETRATING A BEARING WALL OR FOOTING MUST BE SLEEVED AND LOCATION APPROVED IN WRITING BY THE STRUCTURAL ENGINEER.
- ALL COPPER PIPE PENETRATIONS THROUGH CONCRETE WALLS AND FLOORS SHALL BE SLEEVED. SLEEVES SHALL BE SCHEDULE 40 PVC. ALL COPPER PIPE WITHIN CONCRETE BLOCK WALLS SHALL BE WRAPPED WITH UPVC PLASTIC COVERING.



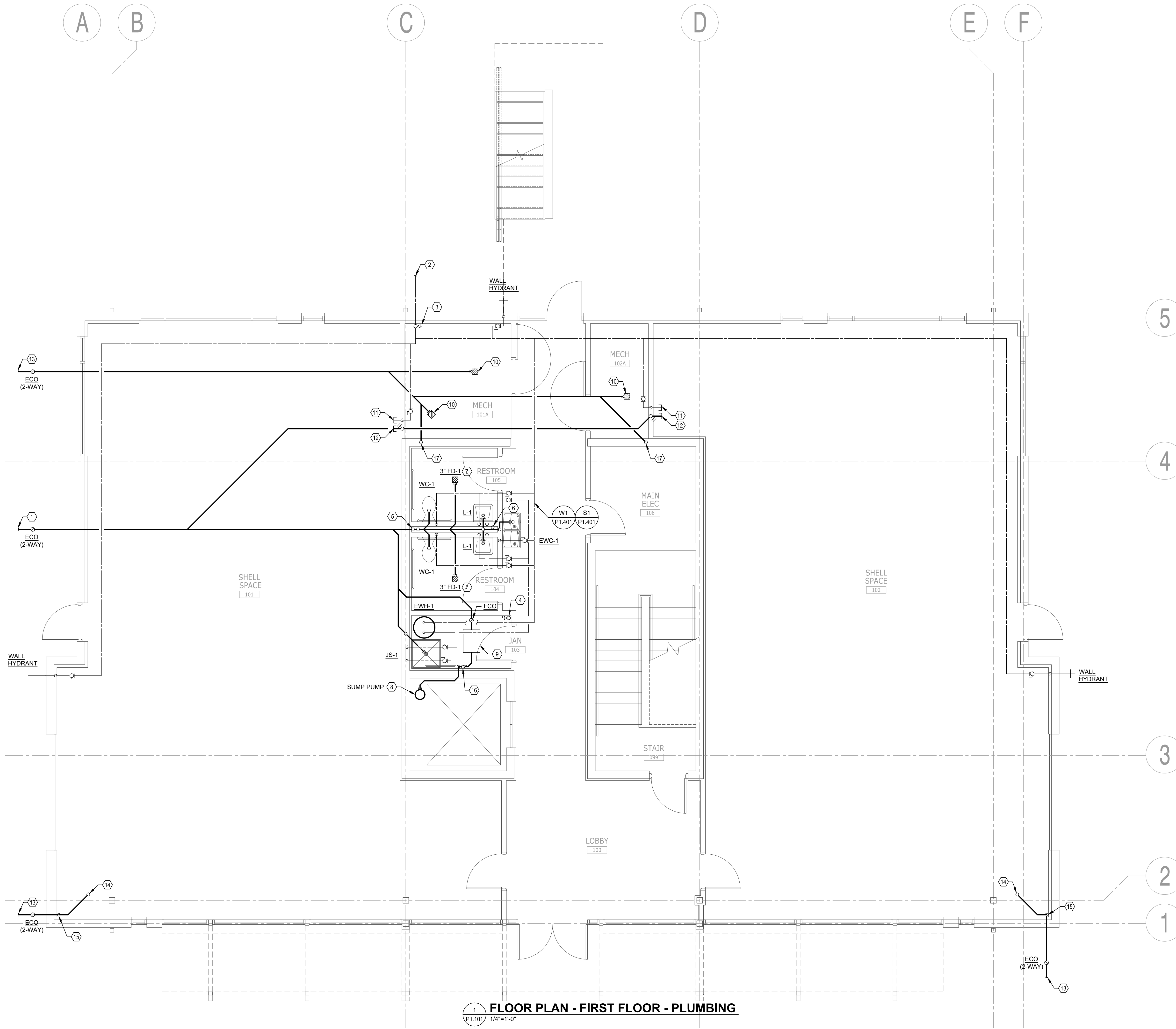
DATE	REVISION	CHECKED	DRAWN

ISSUE FOR BID - 12/20/2019

LEGEND, NOTES AND SCHEDULES - PLUMBING

ERAU PRODUCTION BUILDING
EMBRY-RIDDLE AERONAUTICAL UNIVERSITY, DAYTONA BEACH, FLORIDA

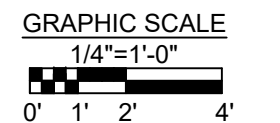
Date: 12/20/2019
Job no.: 2019-5743
Sheet no.: P1.001



REFERENCE NOTES

- ① 4" SANITARY LINE. FOR CONTINUATION REFER TO CIVIL DRAWINGS. LEAVING INVERT AT -3'-6" BFF. (38 FU)
- ② 2-1/2" COLD WATER LINE FOR CONTINUATION REFER TO CIVIL DRAWINGS. (67 FU = 58 GPM)
- ③ 2-1/2" COLD WATER UP FROM BELOW GRADE TO ABOVE CEILING. PROVIDE BALL VALVE IN RISER AT 4'-0" AFF.
- ④ 2" COLD WATER PIPING UP TO SECOND FLOOR.
- ⑤ 4" SANITARY LINE DOWN FROM SECOND FLOOR.
- ⑥ 3" VENT UP TO SECOND FLOOR.
- ⑦ PROVIDE FLOOR DRAIN WITH WATERLESS IN-LINE TRAP SEAL CONFORMING TO ASSE 1072.
- ⑧ 2" SUMP PUMP DISCHARGE DOWN EXPOSED ON WALL AND INDIRECT INTO HUB DRAIN.
- ⑨ OIL WATER SEPARATOR MOUNTED FLUSH WITH FINISHED FLOOR. EQUAL TO JOSAM 60508A, 50 GPM FLOW RATE.
- ⑩ 3" FLOOR DRAIN WITH FUNNEL EQUAL TO JOSAM 30000-S-T-17.
- ⑪ CAP 1/2" COLD WATER PIPING AT 18" AFF FOR FUTURE.
- ⑫ CAP 2" SANITARY PIPE AT 24" AFF FOR FUTURE.
- ⑬ 3" CONDENSATE/STORM LINE. FOR CONTINUATION REFER TO CIVIL DRAWINGS. LEAVING INVERT AT -2'-0" BFF.
- ⑭ 3" CONDENSATE/STORM LINE DOWN FROM SECOND FLOOR.
- ⑮ 3" CONDENSATE/STORM LINE DOWN TO BELOW GRADE.
- ⑯ 4" FLOOR DRAIN WITH FUNNEL AND INTERNAL BACKFLOW VALVE EQUAL TO JOSAM 30000-AJ-T-17.
- ⑰ 3" COMBINATION WASTE AND VENT DOWN FROM SECOND FLOOR.

1 FLOOR PLAN - FIRST FLOOR - PLUMBING
P1.101 1/4"=1'-0"



DATE									
REVISION									CHECKED
									DRAWN

ISSUE FOR BID - 12/20/2019

FLOOR PLAN - FIRST FLOOR - PLUMBING

ERAU PRODUCTION BUILDING

EMBRY-RIDDLE AERONAUTICAL UNIVERSITY, DAYTONA BEACH, FLORIDA

Date: 12/20/2019
Job no.: 2019-5743
Sheet no.:

P1.101

REFERENCE NOTES

- ① 2" COLD WATER COLUMN UP FROM FIRST FLOOR.
- ② 4" SANITARY LINE DOWN TO FIRST FLOOR.
- ③ 3" VENT UP FROM FIRST FLOOR AND VENT THRU ROOF.
- ④ PROVIDE FLOOR DRAIN WITH WATERLESS IN-LINE TRAP SEAL CONFORMING TO ASSE 1072.
- ⑤ 3" CONDENSATE/STORM LINE DOWN TO FIRST FLOOR.
- ⑥ 3" FLOOR DRAIN WITH FUNNEL EQUAL TO JOSAM 30000-S-T-17.
- ⑦ 3" VENT THRU ROOF.
- ⑧ 3" COMBINATION WASTE AND VENT STACK DOWN TO FIRST FLOOR. 3" VENT THRU ROOF.



SALAS O'BRIEN
Expect a difference
 3501 Quadrangle Boulevard, Suite 100
 Orlando, Florida 32817
 (407) 280-0400
 CERT. OF AUTH. NO. 6106
 ■ GARY A. WILKERSON, P.E. 43167
 ■ KYLE J. CARTER, P.E. 53269
 ■ JEFF A. KIRKMAN, P.E. 65629
 ■ ADAM S. LEVINE, P.E. 77010
 19035



HOUSEMAN ARCHITECTURE
 931 S. SEMORAN BLVD. #204B WINTER PARK, FL 32792
 321-972-8446 AR0017845
ALL IDEAS, DESIGN, AND DETAILS REPRESENTED BY THIS DRAWING ARE OWNED BY AND THE PROPERTY OF HOUSEMAN ARCHITECTURE, LLC AND ARE CREATED HEREIN. NO LIABILITY FOR OR ORIGIN OR CONNECTION WITH THE SPECIFIED PROJECT NONE OF THE IDEAS, DESIGN, OR DETAILS SHALL BE USED BY OR DISCLOSED TO ANYONE FOR ANY PURPOSE WHATSOEVER WITHOUT THE WRITTEN PERMISSION OF HOUSEMAN ARCHITECTURE, LLC.

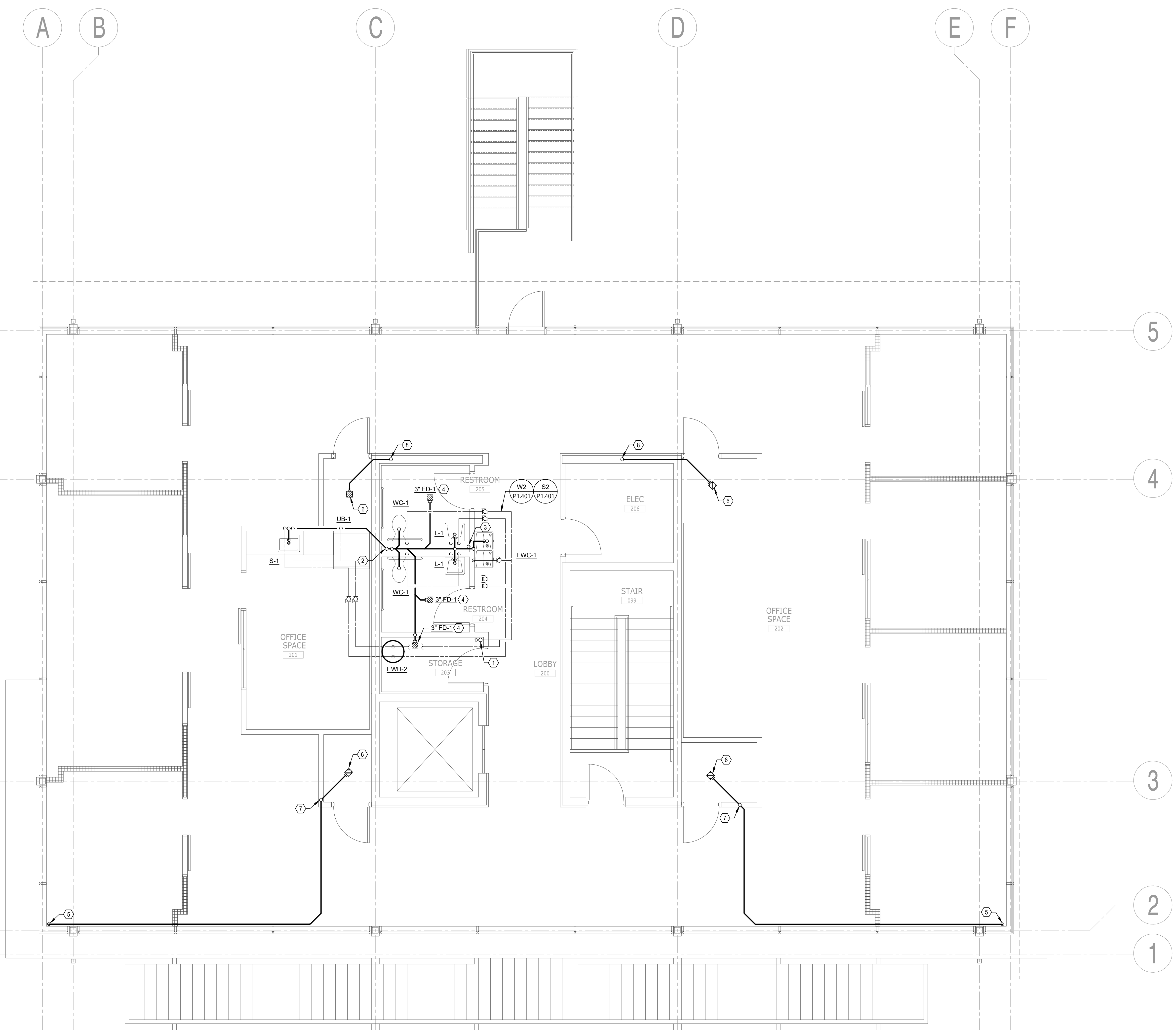
DATE	REVISION	DRAWN	CHECKED

ISSUE FOR BID - 12/20/2019

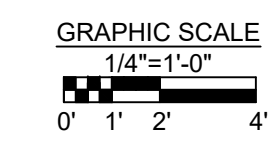
FLOOR PLAN - SECOND FLOOR - PLUMBING

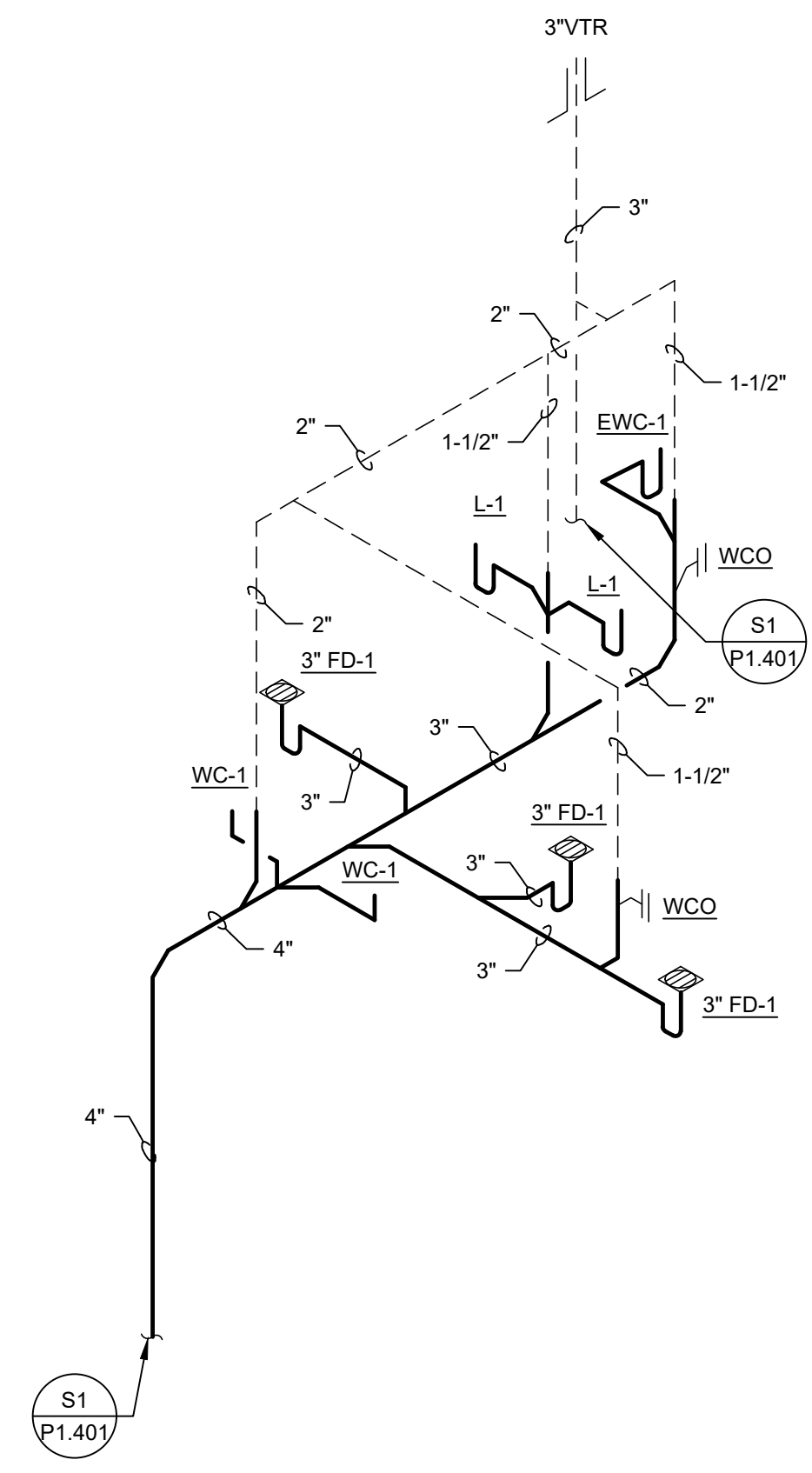
ERAU PRODUCTION BUILDING
 EMBRY-RIDDLE AERONAUTICAL UNIVERSITY, DAYTONA BEACH, FLORIDA

Date: 12/20/2019
 Job no.: 2019-5743
 Sheet no.: **P1.102**

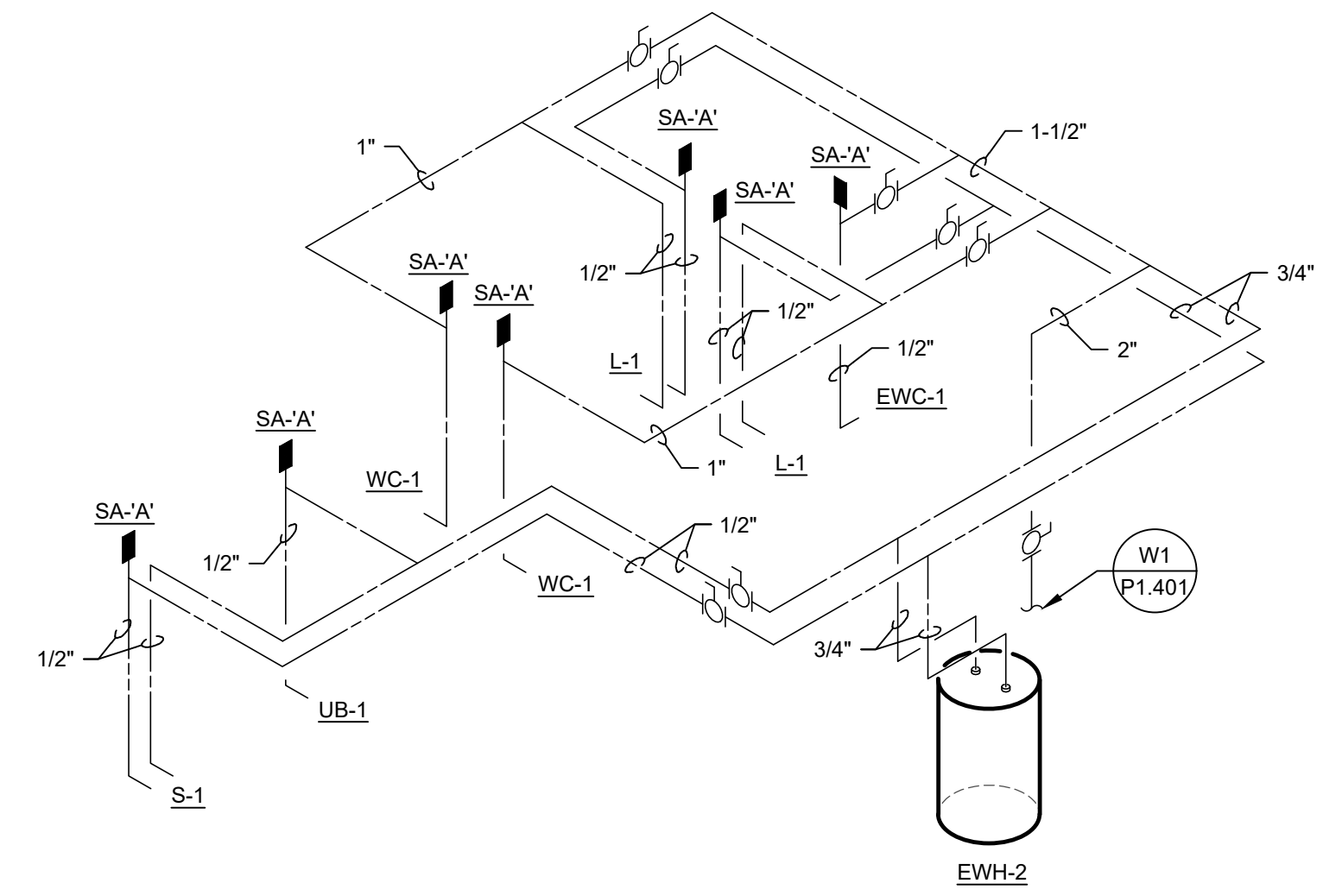


1 FLOOR PLAN - SECOND FLOOR - PLUMBING
 P1.102 1/4"=1'-0"

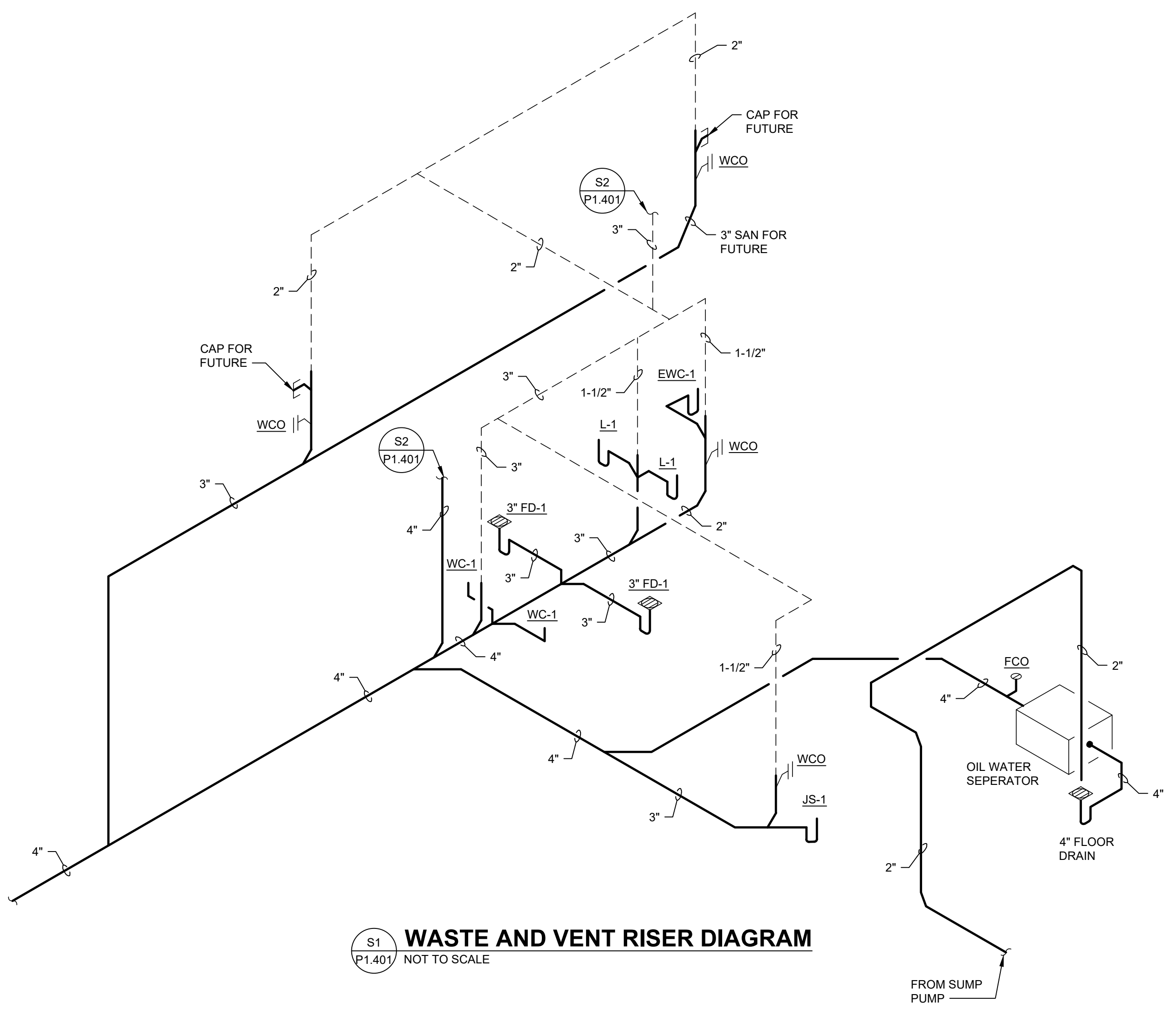




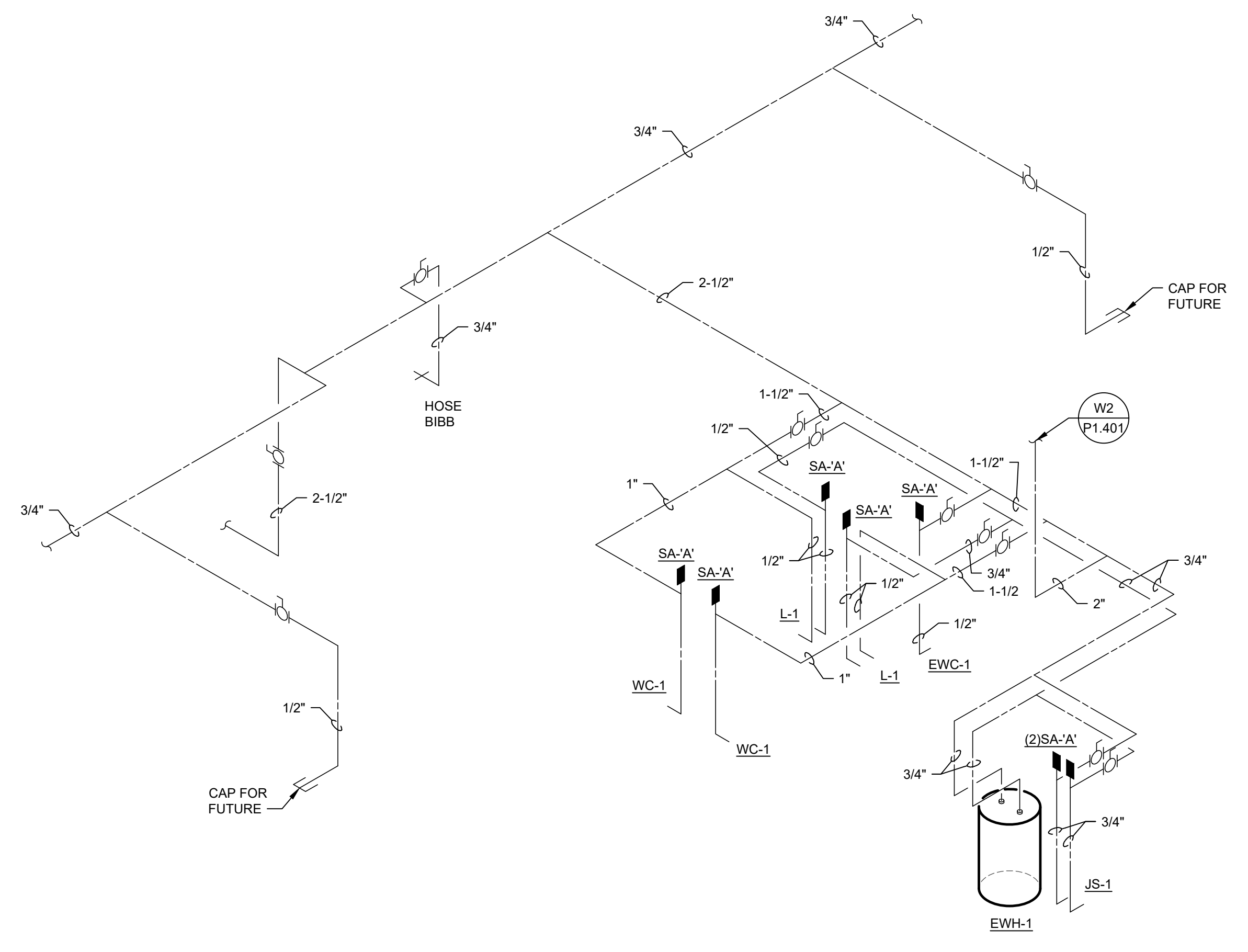
S1
P1.401
WASTE AND VENT RISER DIAGRAM
NOT TO SCALE



W1
P1.401
HOT AND COLD WATER RISER DIAGRAM
NOT TO SCALE



S2
P1.401
WASTE AND VENT RISER DIAGRAM
NOT TO SCALE



W2
P1.401
HOT AND COLD WATER RISER DIAGRAM
NOT TO SCALE

DATE	REVISION	DRAWN	CHECKED

ISSUE FOR BID - 12/20/2019

RISER DIAGRAMS - PLUMBING
ERAU PRODUCTION BUILDING
EMBRY-RIDDLE AERONAUTICAL UNIVERSITY, DAYTONA BEACH, FLORIDA

Date: 12/20/2019
Job no.: 2019-5743
Sheet no.: **P1.401**